

NEW THINKING

NEW TECHNOLOGY

NEW METHODOLOGY



TABLE OF CONTENTS

ABOUT ATGC

DESIGN APPROACH

DESIGN TEAM

ATGC CONSTRUCTION DIVISIONS

ATGC PROJECTS

ACCREDITATIONS

A man in a grey suit and striped tie is holding a white hard hat. The background is a city skyline with a bridge and water, overlaid with a semi-transparent geometric pattern. The text 'ABOUT ATGC' is centered in the image.

ABOUT **ATGC**

ABOUT US

INTRODUCTION

THE GENESIS

Established in 1972 in Abu Dhabi, UAE - ATGC is one of the leading and fastest-growing Contracting Companies in the MENA region

THE LEGACY

ATGC has completed multi-disciplined projects (including, but not limited to) the design and building of Skyscrapers, Mixed-use Developments, Residential and Commercial Communities, IT Data Centres, Field Hospitals, Specialized ETFE, Indoor Intelligent Farming Structures (including plantations) and Infrastructure Development

THE SCOPE

ATGC is a qualified Fast Track Design & Build Contractor, providing end-to-end Construction solutions through turnkey projects

THE REACH

ATGC's scope of operations span Asia and Africa, with varied contracting operations throughout the MENA region

THE TRUST

ATGC is a recognized and accredited ISO-certified Company.

THE CLIENTELE

ATGC's esteemed clients include Government Institutions, Private Developers and Investors

OUR VISION

Be a world-class company with a global presence by maintaining a **sustainable trustworthy relationship with our clients, partners and employees.**

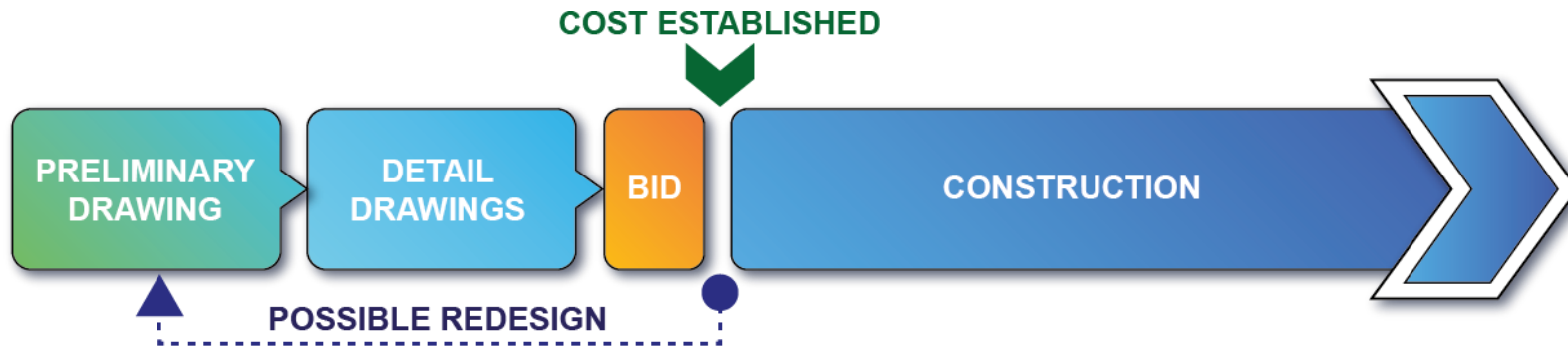
ATGC is committed to making **safety as a top priority for all their employees with zero risk tolerance** for their health and safety.

ATGC ensures **global quality, reliability and transparency.**

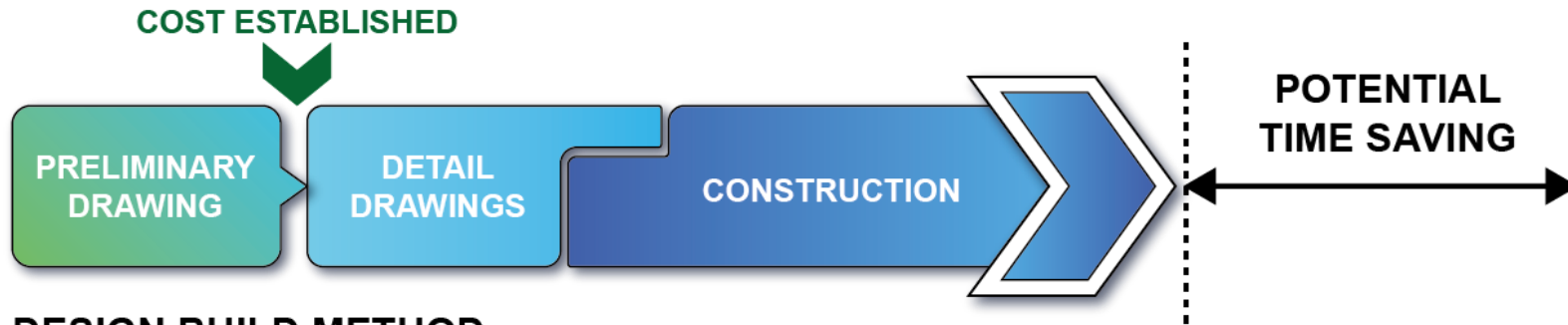
ATGC sustainability vision focuses on

- Environmental awareness with **high regard to HSE.**
- Proactively ensuring **ethical and transparent working environment.**

WHY DESIGN & BUILD



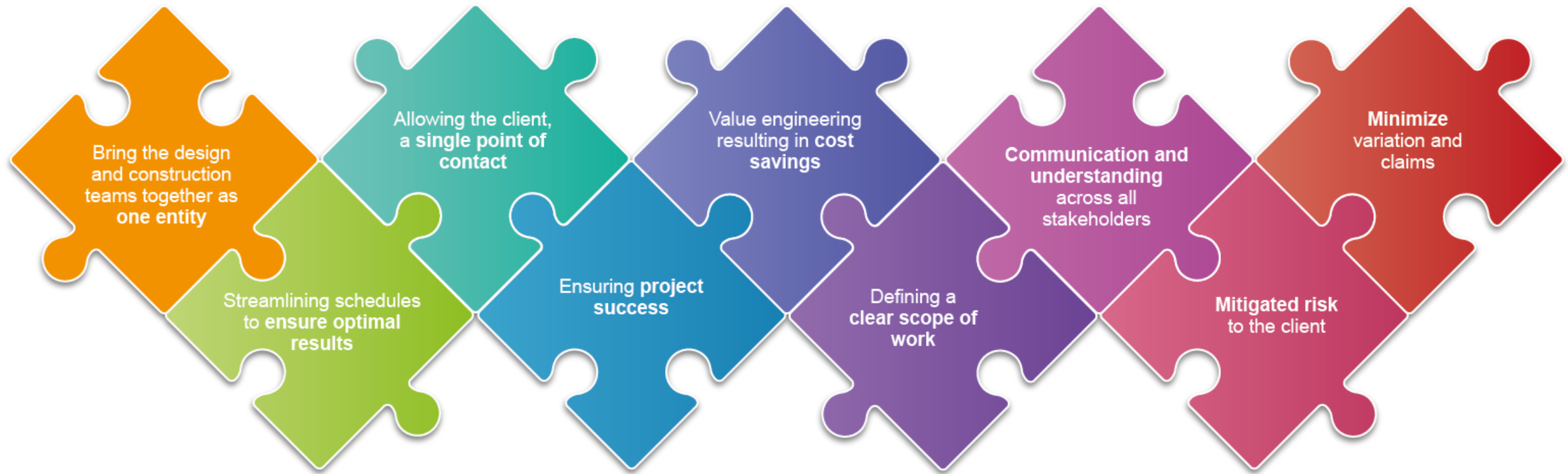
TRADITIONAL DESIGN - BID - BUILD METHOD



DESIGN BUILD METHOD

WHY

DESIGN & BUILD



ATGC's DESIGN & BUILD

PROJECTS



TRADITIONAL SOUQ
Project Value USD 350M



CRYPTO MINING DATA
CENTRE
Project Value USD 550M



AL BARARI
Project Value USD 350M



7 FIELD HOSPITALS:
MENA REGION
Project Value USD 210M



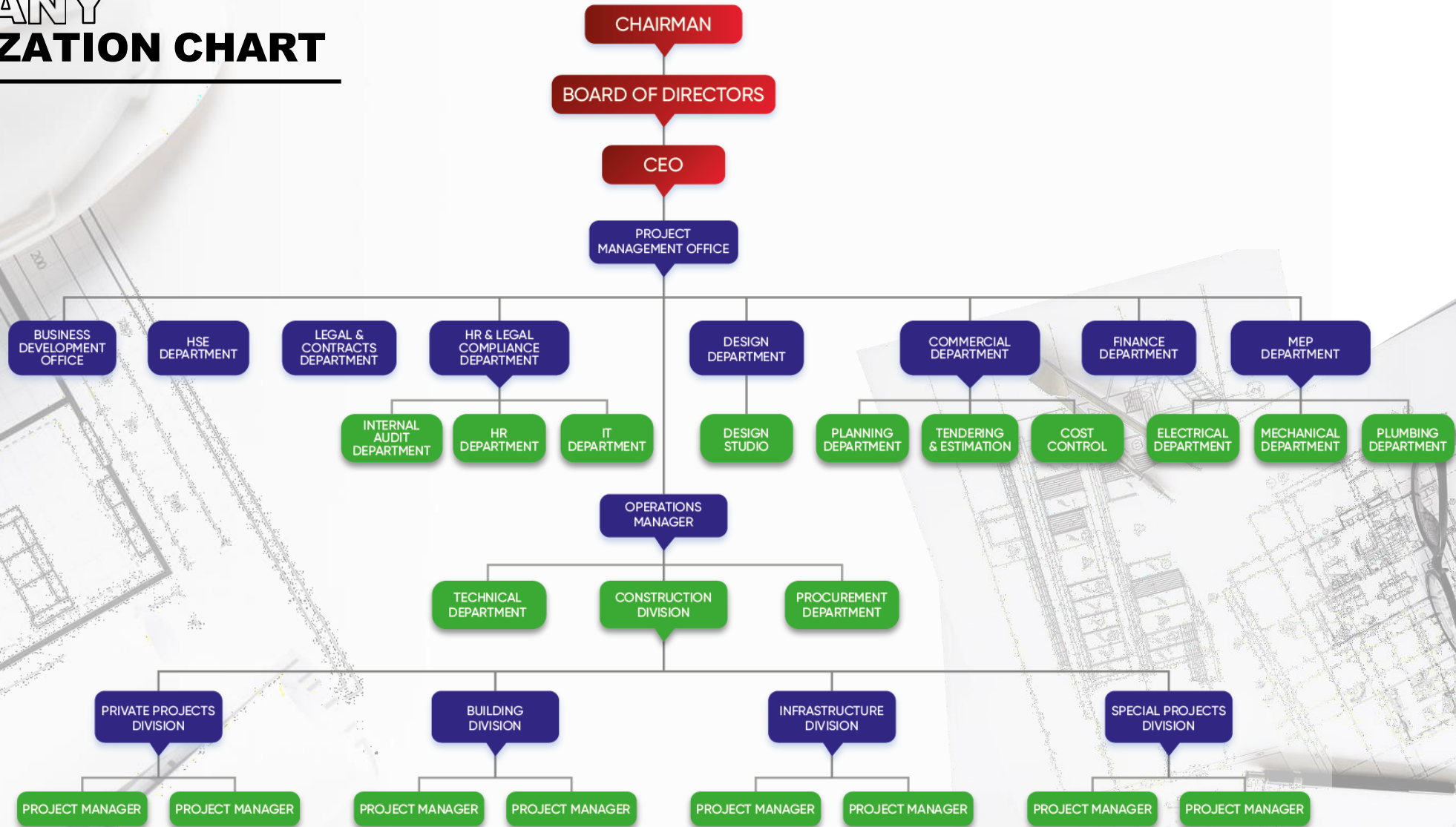
AL RAHBA
Project Value USD 60M



EMIRATES
HUMANITARIAN CITY
Project Value USD 490M

ATGC

COMPANY ORGANIZATION CHART



ORGANIZATIONAL COMMUNICATION STRATEGY



A conceptual image for a design presentation. In the foreground, a hand holds a pair of compasses, with one leg touching a curved highway interchange. The background is a blurred cityscape with tall buildings and a bright sun flare in the center. The text 'DESIGN APPROACH' is overlaid in the middle.

DESIGN **APPROACH**

OUR **7 STEP DESIGN APPROACH**



1 VISUALIZE THE PROJECT

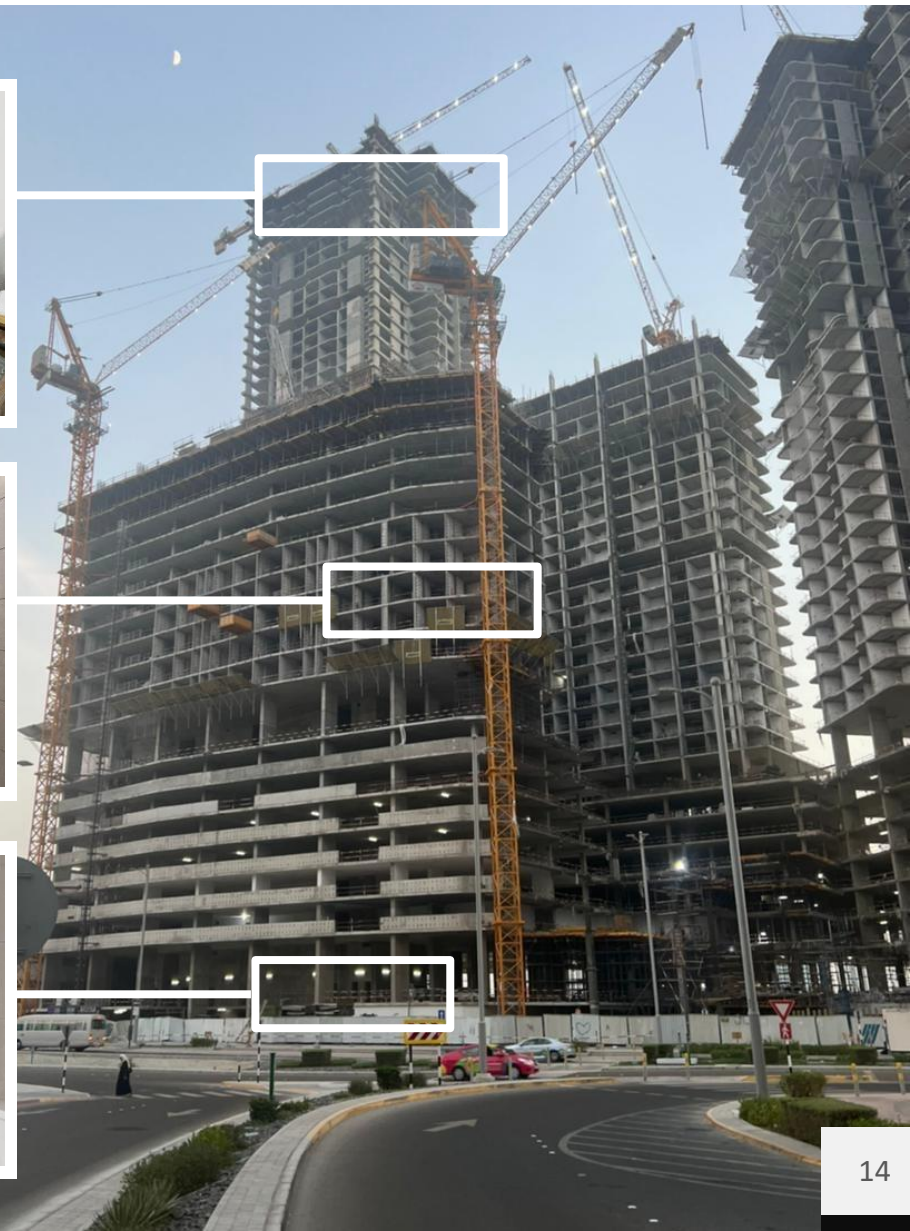
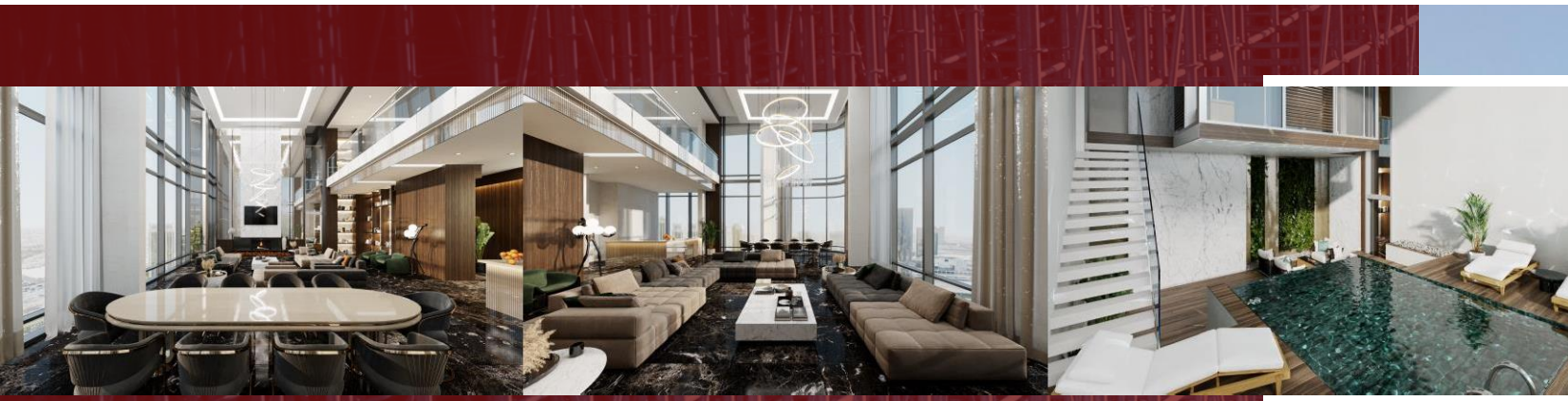


Key benefits:

- Early stage detection of any changes
- Facilitation of the decision-making process
- Enhancement of marketing
- Better coordination and collaboration
- High level of photorealism



1 VISUALIZE THE PROJECT



2 DEVELOP THE DESIGN



DIGITAL TWIN CONCEPT

Detailed and comprehensive BIM Models for all trades:

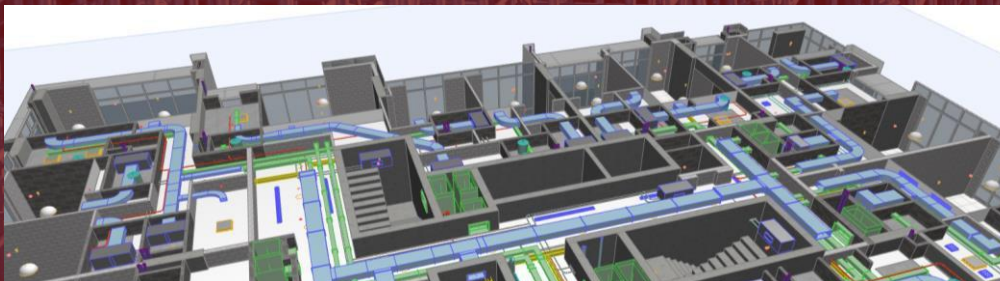
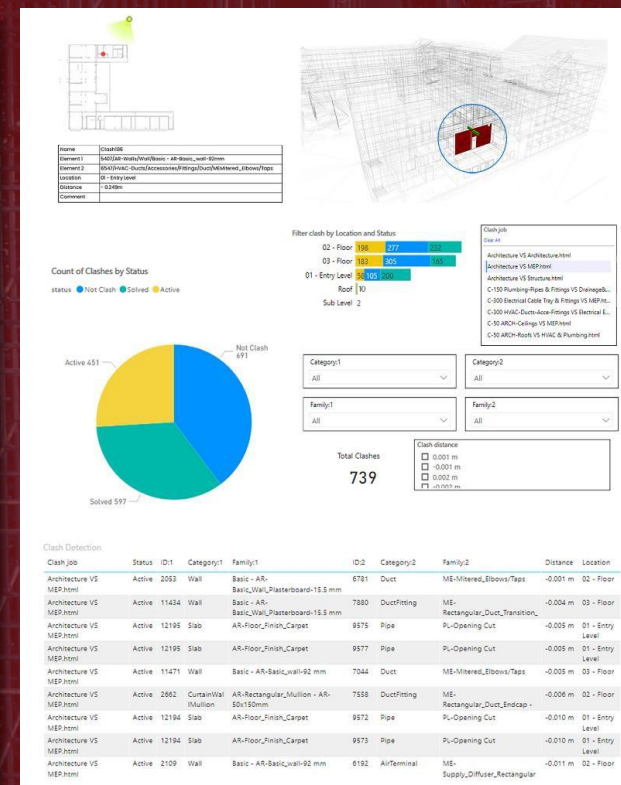
- LOD 100: Concept Design
- LOD 200: Schematic Design
- LOD 300: DD stage
- LOD 400: Shop Drawings stage
- LOD 500: Facilities Management
- Cost Classification data incorporated into the model
- Organized Model Hierarchies and strict Naming Conventions
- Coordination of all disciplines



1. VALIDATE THE PROJECT
2. DEVELOP THE DESIGN
3. OPTIMIZE THE PROJECT
4. STANDARDIZATION
5. PARALLEL PROCESSES
6. CITY ENERGY
7. TRANSPARENCY

- Full Automation
- Early identification of any clashes and impact categorization
- Resolution of clashes with our Consultants during coordination sessions
- Enabling a well organized and efficient construction process

	Components	Architecture										Structure						HVAC		Plumbing		Drainage		Fire-Fighting		Electrical														
		Ceilings	Curtain Panels	Curtain wall mullions	Doors	Floors	Railings	Ramps	Roofs	Specialty Equipment	Stairs	Walls	Windows	Columns	Foundations	Floors	Framing	Trusses	Walls	Air Terminals	Duct/Accel/Fittings	Mechanical equipment	Pipes & fittings	Plumbing fixtures	Pipes & fittings	Drainage fixtures	Mechanical equipment	Pipes & fittings	Sprinklers	Cable trays & fittings	Communication devices	Data Devices	Electrical equipment	Electrical fixtures	Fire Alarm Devices	Lighting Devices	Lighting Fixtures	Security Devices		
Architecture	Ceilings																																							
	Curtain Panels	H																																						
	Curtain wall mullions	H	N/A																																					
	Doors	N/A	H	N/A																																				
	Floors	N/A	N/A	N/A	N/A	H																																		
	Railings	N/A	N/A	N/A	N/A	H	N/A																																	
	Ramps	N/A	N/A	N/A	N/A	H	N/A	N/A																																
	Roofs	N/A	H	H	H	H	N/A	N/A	N/A																															
Structure	Specialty Equipment	H	H	H	H	H	H	H	N/A																															
	Stairs	N/A	H	H	H	N/A	N/A	N/A	N/A	H	H																													
	Walls	N/A	N/A	N/A	H	N/A	N/A	N/A	N/A	H	H	H																												
	Windows	N/A	N/A	N/A	N/A	H	H	H	H	H	H	N/A																												
	Columns	N/A	H	H	H	N/A	H	H	N/A	H	H	N/A	H																											
	Foundations	N/A	N/A	N/A	N/A	N/A	N/A	N/A	N/A	N/A	N/A	N/A	N/A	N/A																										
	Floors	N/A	N/A	N/A	N/A	N/A	N/A	N/A	N/A	N/A	N/A	N/A	N/A	N/A	N/A																									
	Framing	H	H	H	H	N/A	N/A	H	N/A	H	H	H	N/A	N/A	N/A	H																								
HVAC	Trusses	H	H	H	N/A	N/A	H	N/A	H	H	H	N/A	N/A	N/A	H	H																								
	Walls	N/A	H	H	H	H	H	H	H	H	H	H	N/A	N/A	N/A	H	H																							
	Air Terminals	N/A	H	H	H	N/A	N/A	N/A	N/A	H	H	H	H	N/A	N/A	H	H																							
	Ducts/Accel/Fittings	C-50	H	H	H	H	N/A	N/A	H	H		C-50	H	C-50	N/A	H	H	C-50-C-50	-50	H																				
	Mechanical Equipment	C-50	H	H	H	H	H	H	H	H	H	H	H	H	H	H	H																							
	Pipes & fittings	C-50	H	H	H	N/A	N/A	N/A	C-50	H	H		C-50	H	N/A	N/A	H	H	C-50-C-50	-50C-50	-50																			
	Pipes & fittings	C-50	H	H	H	N/A	N/A	N/A	C-50	H	H		C-50	N/A	N/A	N/A	H	H	C-50-C-50	-50C-50	-50C-150																			
	Plumbing fixtures	N/A	H	H	H	N/A	N/A	N/A	H	N/A	H	H		H	N/A	N/A	N/A	H	H	N/A	N/A	N/A	N/A	N/A	N/A	N/A	N/A	N/A	N/A	N/A	N/A	N/A	N/A	N/A	N/A	N/A	N/A	N/A	N/A	
Plumbing	Pipes & fittings	C-50	H	H	H	N/A	N/A	N/A	C-50	H	H		C-50	N/A	N/A	N/A	H	H	C-50-C-50	-50C-50	-50C-150																			
	Pipes & fittings	C-50	H	H	H	N/A	N/A	N/A	H	H	H		C-50	H	N/A	N/A	H	H	C-50-C-50	-50C-50	-150C-150																			
	Drainage fixtures	N/A	H	H	H	H	H	H	H	H	H	H		H	N/A	H	H	N/A	H	H	H	H	H	H	H	H	H	H	H	H	H	H	H	H	H	H	H	H		
	Mechanical Equipment	C-50	H	H	H	N/A	N/A	N/A	H	H	H	H		H	N/A	N/A	N/A	H	H	C-50	H	C-50	H	C-50	H	C-50	H	C-50	H	C-50	N/A									
	Pipes & fittings	C-50	H	H	H	N/A	H	H	H	H	H	H		H	N/A	N/A	N/A	H	H	C-50	H	C-50	H	C-50	H	C-50	H	C-50	H	C-50	N/A									
	Sprinklers	N/A	H	H	H	N/A	N/A	N/A	N/A	H	H	N/A	H	H	N/A	N/A	N/A	H	H	C-50	H	C-50	-50	N/A	H	N/A	N/A	N/A	N/A	N/A	N/A									
	Cable trays & fittings	C-50	H	H	N/A	N/A	N/A	N/A	N/A	H	H	N/A	H	N/A	N/A	N/A	H	H	H	>300	H	>300	-300	N/A	>300	N/A	>300	N/A	C-50	-300	H									
	Communication Dev	N/A	H	H	N/A	N/A	N/A	N/A	N/A	N/A	N/A	N/A	N/A	N/A	N/A	N/A	N/A	N/A	N/A	H	C-50	H	C-50	H	C-50	H	C-50	H	C-50	N/A	N/A	N/A	N/A	N/A	N/A	N/A	N/A	N/A	N/A	
Fire-Fighting	Data Devices	N/A	H	H	N/A	N/A	N/A	N/A	N/A	N/A	N/A	N/A	N/A	N/A	N/A	N/A	N/A	N/A	N/A	H	C-50	H	C-50	H	C-50	H	C-50	H	C-50	N/A	N/A	N/A	N/A	N/A	N/A	N/A	N/A	N/A	N/A	
	Electrical Equipment	N/A	H	H	N/A	N/A	N/A	N/A	N/A	N/A	N/A	N/A	N/A	N/A	N/A	N/A	N/A	N/A	N/A	H	>300	-300	-90C-100	-100	N/A	>300	N/A	C-50	-100	H		H	H							
	Electrical fixtures	N/A	H	H	H	N/A	N/A	N/A	N/A	N/A	N/A	N/A	N/A	N/A	N/A	N/A	N/A	N/A	N/A	H	N/A	N/A	N/A	N/A	N/A	N/A	N/A	N/A	N/A	N/A	N/A	N/A	N/A	N/A	N/A	N/A	N/A	N/A	N/A	
	Fire Alarm Devices	N/A	H	H	N/A	N/A	N/A	N/A	N/A	N/A	N/A	N/A	N/A	N/A	N/A	N/A	N/A	N/A	N/A	H	>100	H	>100	-100	N/A	>100	N/A	C-50	-100	H		H	N/A	N/A	H	H				
	Lighting Devices	N/A	H	H	N/A	N/A	N/A	N/A	N/A	N/A	N/A	N/A	N/A	N/A	N/A	N/A	N/A	N/A	N/A	H	C-50	H	H	N/A	H	N/A	C-50	H	C-50	H	H	N/A	N/A	H	N/A	H				
	Lighting Fixtures	N/A	H	H	N/A	N/A	N/A	N/A	N/A	N/A	N/A	N/A	N/A	N/A	N/A	N/A	N/A	N/A	N/A	H	C-50	H	H	N/A	H	N/A	C-50	H	C-50	H	H	N/A	N/A	H	N/A	H				
	Security Devices	N/A	H	H	H	N/A	N/A	N/A	N/A	N/A	N/A	N/A	N/A	N/A	N/A	N/A	N/A	N/A	N/A	H	C-50	H	H	N/A	H	N/A	C-50	H	C-50	H	H	N/A	N/A	H	N/A	H	H			



3 OPTIMIZE THE PROJECT



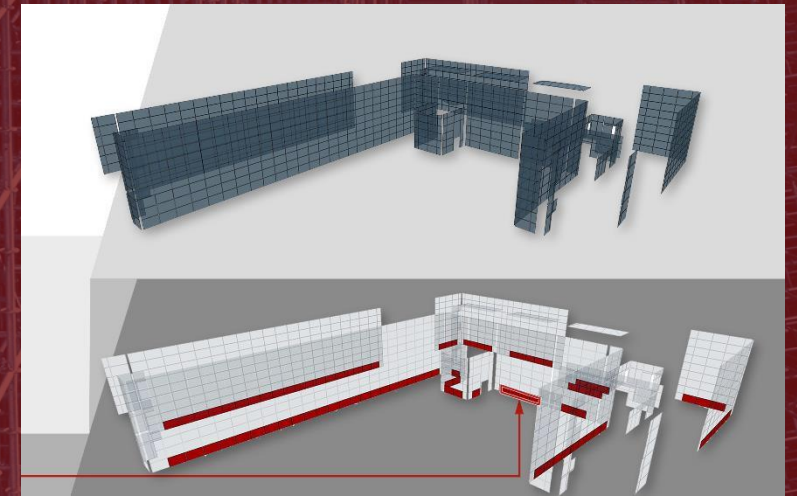
'What if Analysis' that assists in making informed decisions
by all our construction managers



EVALUATION OF DESIGN OPTIONS



VE OPTIMIZATIONS

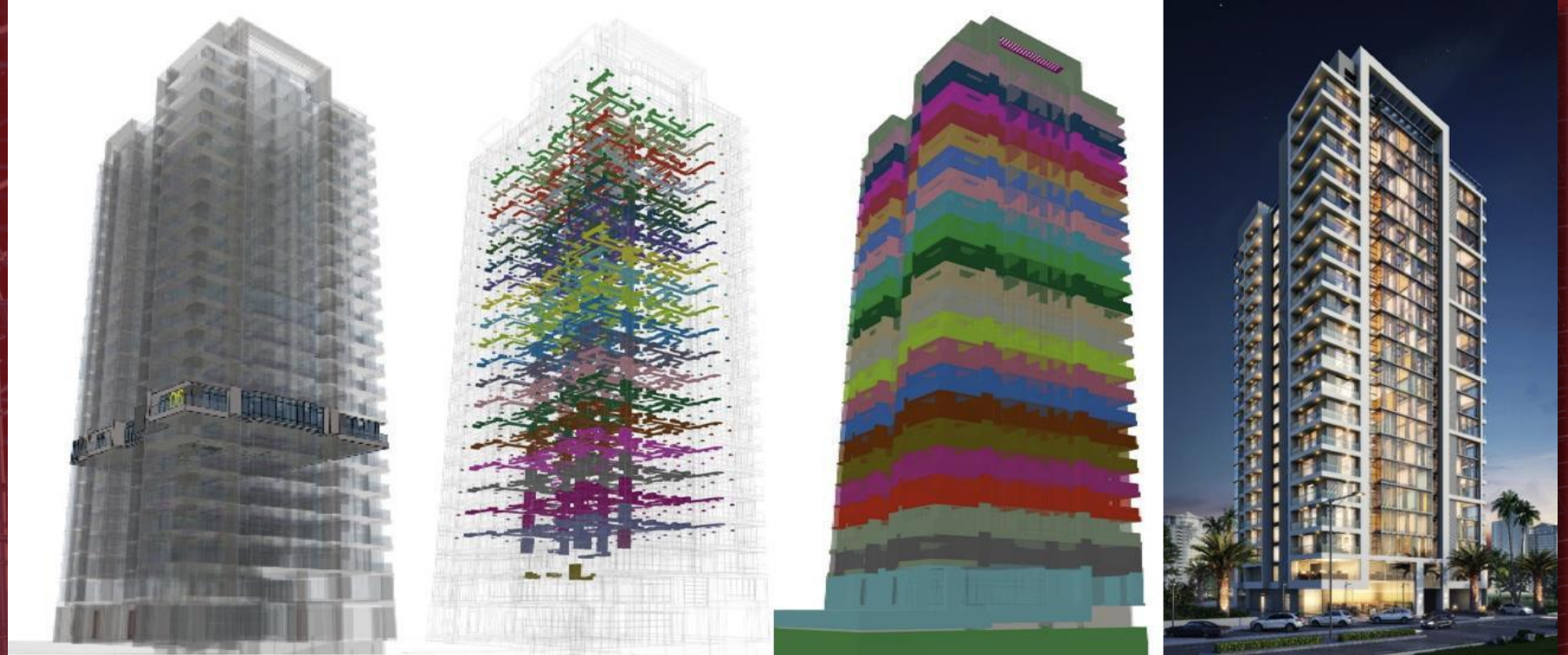


SUBCONTRACTOR PACK. OPTIMIZATIONS

4 STANDARDIZATION



- Promoting and mandating a process that is standards-based
- Compatible technologies and processes within every project
- Quality and consistency of all technologies
- Interoperability and safety of all technologies



What makes a city beautiful?



City Diversity.....

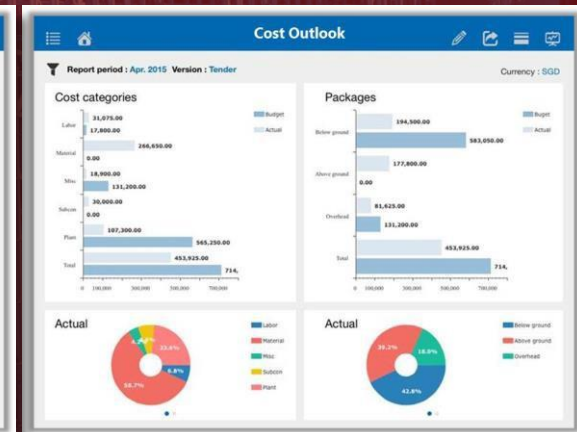


....or Uniqueness?

7 TRANSPARENCY



- Automated process – generating precise and detailed Cost Reports from our Models
- Value Engineering – quick quantification for all proposed alternatives
- Varied Exploration – of different design options for each client
- On Budget – stay on costs with frequent cost estimates, and not just design submissions
- Cash Flow – prediction analytics and scenarios
- Data Flow – capturing all Historical Cost Data from the start



A&K TOWER

5D SIMULATION





DESIGN TEAM

LAHORE TIMES SQUARE DESIGN TEAM

ATGC has locally and internationally involved in a various Design Projects along with the multinational associate / partners- Designers & Consultants.

ATGC CONSTRUCTION DIVISIONS

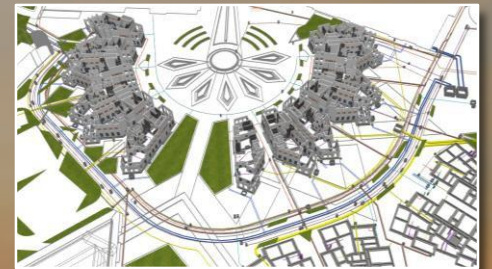
ATGC is involved in diverse sectors of construction:

- Skyscrapers
- Mixed-use residential and commercial community development
- Hospitality Building
- Health Care Units
- Shopping Malls
- Field Hospitals



ATGC's Infrastructure Division is involved in mega infra projects

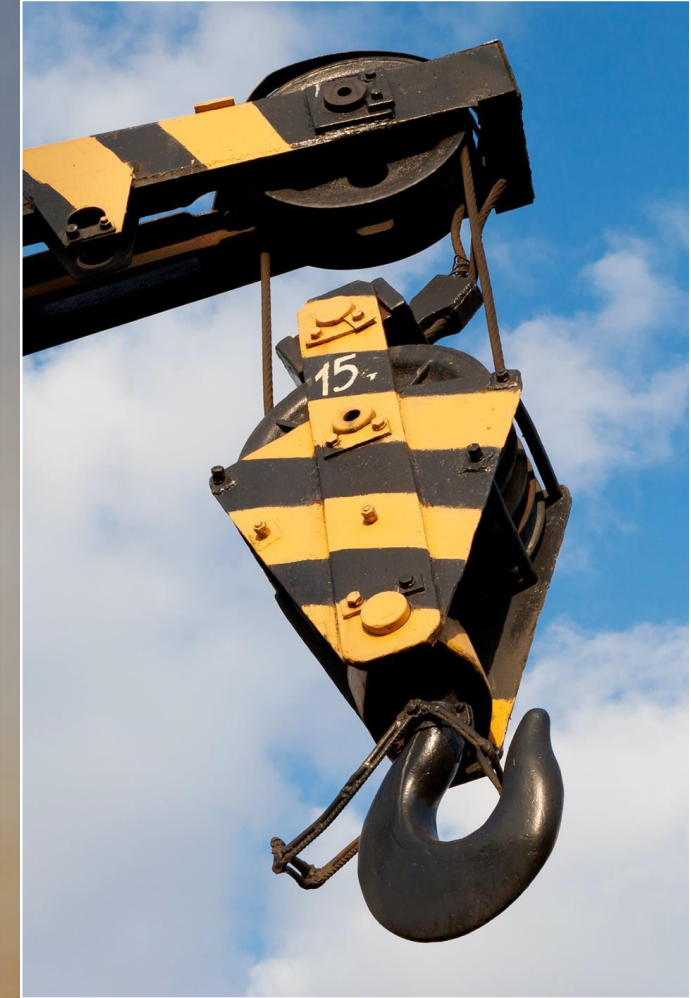
- Roads and Utilities Network
- Maintenance of Infrastructure
- Impact of Failure
- Risk Analysis
- Performance Monitoring
- Condition Assessment
- Non-destructive Testing and Evaluation
- Environmental Impact Studies
- Quality Control and Assurance



TRANSPORTATION DIVISION

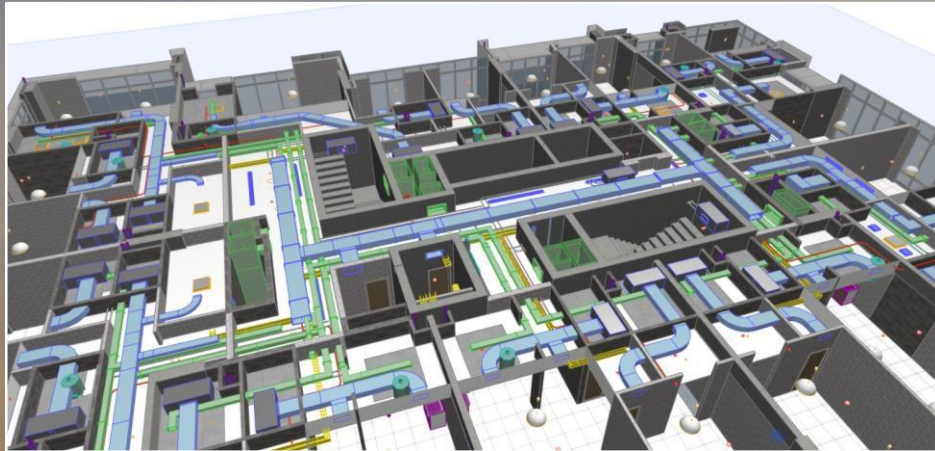
ATGC's Transportation Division has a large fleet of machineries, equipment and trucks

- Large Trucks, Tippers and Trailers
- Graders and Asphalt Pavers
- Wheel Loaders and Earth Moving Equipment
- Batching Plants
- Mobile Cranes
- Tower Cranes



ATGC's MEP Division provides complete turnkey MEP solutions

- Fire Fighting Systems
- Plumbing Works
- HVAC Systems
- District Cooling Plants
- Electrical Systems
- Low Current Systems
- Smoke Management Systems



ATGC's ETFE (**Ethylene tetrafluoroethylene**) Division provides full ETFE envelope solutions to steel structures for Indoor AC-controlled facilities.

Fully sustainable development.



GREEN HOUSE DIVISION

ATGC's Green Houses Division was recently established in the UAE

- Supports the UAE's initiative of promoting indoor intelligent farming
- Helps reduce carbon footprint via Hydroponic Farming Systems
- Helps control food production emissions which account for 25% of all greenhouse gas emissions globally*

**Source: Climate & Environment, UN News, 9th March 2021*



A laptop is open, showing a city skyline on its screen. A construction crane is visible in the background of the city. On the laptop's keyboard, there is a yellow hard hat and a rolled-up document. The text 'ATGC PROJECTS' is overlaid on the image, with 'ATGC' in bold red and 'PROJECTS' in red outline.

ATGC PROJECTS

INFRASTRUCTURE PROJECTS

Ain Al Fayda Project

Enabling Work Stage



INFRASTRUCTURE PROJECTS

AL Barari Project

Ongoing Work



ATGC

**PEARL BAY
TOWER**

Abu Dhabi
UAE

BUA
319,000 sqm

Mixed Development
Height 211m
56 Storeys

Project Value
USD 382M

Status
Under Construction



ATGC

**PEARL BAY
TOWER**

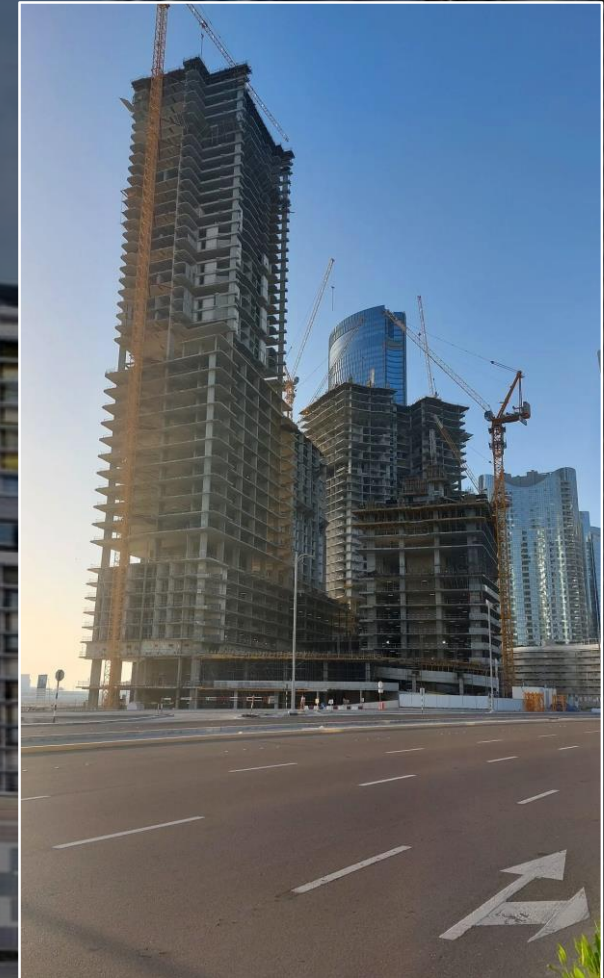
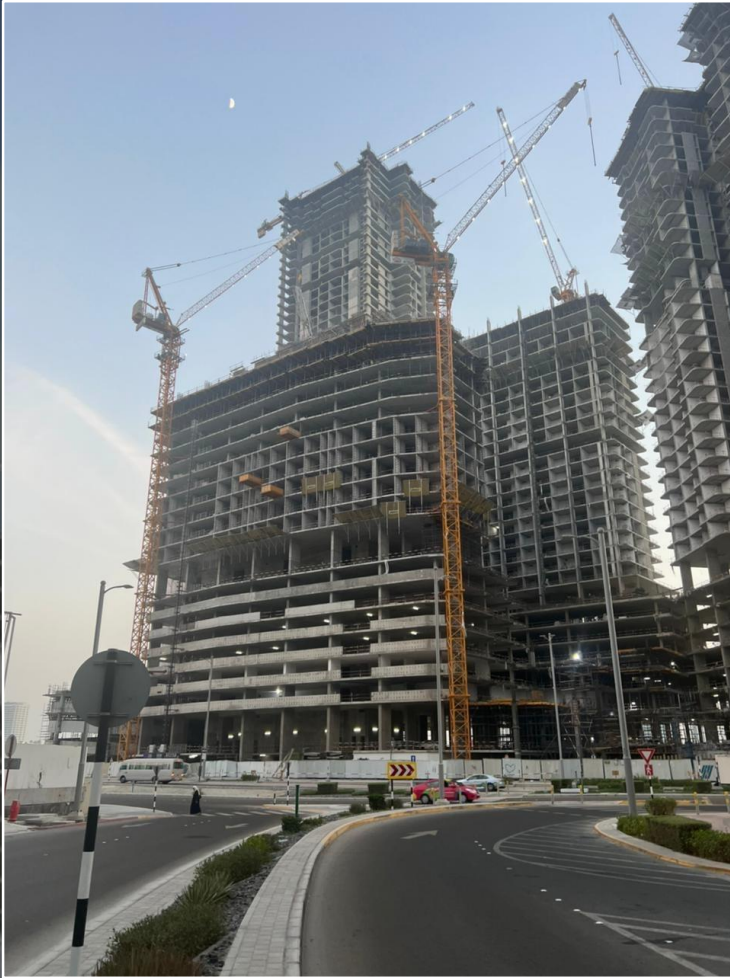
Abu Dhabi
UAE

BUA
319,000 sqm

Mixed Development
Height 211m

Project Value
USD 382M

Status
Under Construction





ATGC

A & K TOWER

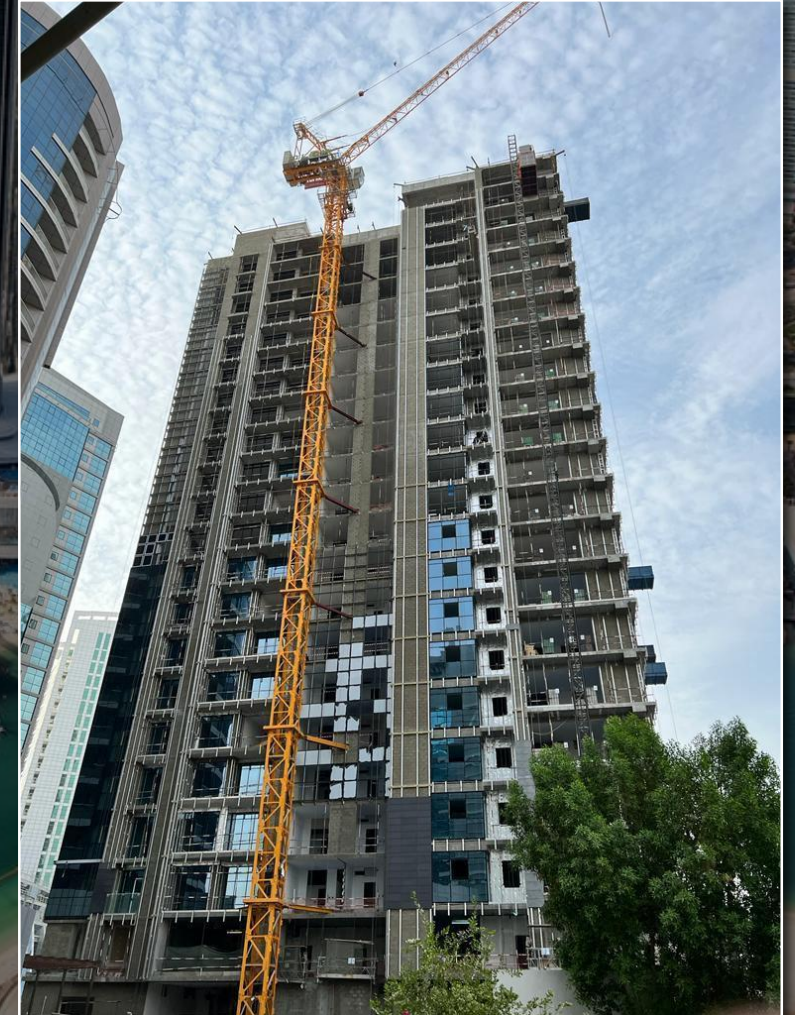
Abu Dhabi
UAE

BUA
38,246 sqm

Mixed Development
Height 86m

Project Value
USD 170M

Status
Under Construction



ATGC

**TRADITIONAL
SOUQ**

Abu Dhabi
UAE

BUA
300,000 sqm

Mixed Development

Project Value
USD 350M

Status
Under Construction



**TRADITIONAL
SOUQ**

Abu Dhabi
UAE

BUA
300,000 sqm

Mixed Development

Project Value
USD 350M

Status
Under Construction





ATGC

REEM HILLS

Abu Dhabi
UAE

BUA
Approx. 700,000 sqm

200 VVIP Villas

Project Value
USD 350M

Status
Under Construction





**ATGC has been awarded by ADNOC,
a USD 1.8 Billion project
that comprises of 5,800 residential
units spread over 6 sites.**





AL RAHBA



MINA BEACH CLUB



ROYAL WALK

ATGC

**FOUR SEASONS
KASR AL BAHAR**

Rabat
Morocco

BUA
78,000 sqm

5 Star Hotel
204 Keys

Project Value
USD 180M

Status
Under Construction





FOUR SEASONS
KASR AL BAHAR

Rabat
Morocco

BUA
78,000 sqm

5 Star Hotel
204 Keys

Project Value
USD 180M

Status
Under Construction







**LANDMARK
HOTEL**Abu Dhabi
UAEBUA
30,000 sqmHotel
200 KeysProject Value
USD 35MStatus
Completed



- Morocco
- Tunisia
- Egypt
- Lebanon
- Syria
- Jordan



7 FIELD
HOSPITALS

Morocco
Tunisia
Egypt

Lebanon
Syria
Jordan

BUA
50,000 sqm

Hospitals

Project Value
USD 250M

Status
Completed





ATGC ACCREDITATIONS

International Organization for Standardization (ISO) Certification

Occupational Health & Safety Management System

ATGC LLC
Transport & General contracting L.L.C.

Accreditation 2019 Renewed and upgraded to 45001

CERTIFICATE
OF REGISTRATION

This is to certify that the Management System of
A T G C Transport and General Contracting L.L.C.
Office No #901, Al Wadha Tower, Abu Dhabi, United Arab Emirates,
has been assessed and registered by Veritas Assurance International as conforming to the requirements of
ISO 45001:2018
Occupational Health & Safety Management System

The Occupational Health & Safety Management System is applicable to:
All Kind of Building Projects Contracting, Building Maintenance, Real Estate Development Construction, Sewerage Network, Mechanical and Electrical Contracting.

Certificate No : 321182067
Certificate issue date : 22-09-2021 | Certificate expiry date : 21-09-2024
1st Surveillance due before : 21-09-2022 | 2nd Surveillance due before : 21-09-2023

www.veritasassurance.com

VERITAS ASSURANCE INTERNATIONAL

Environmental Management System

ATGC LLC
Transport & General contracting L.L.C.

CERTIFICATE
OF REGISTRATION

This is to certify that the Management System of
A T G C Transport and General Contracting L.L.C.
Office No #901, Al Wadha Tower, Abu Dhabi, United Arab Emirates,
has been assessed and registered by Veritas Assurance International as conforming to the requirements of
ISO 14001:2015
Environmental Management System

The Environmental Management System is applicable to:
All Kind of Building Projects Contracting, Building Maintenance, Real Estate Development Construction, Sewerage Network, Mechanical and Electrical Contracting.

Certificate No : 321182066
Certificate issue date : 22-09-2021 | Certificate expiry date : 21-09-2024
1st Surveillance due before : 21-09-2022 | 2nd Surveillance due before : 21-09-2023

www.veritasassurance.com

VERITAS ASSURANCE INTERNATIONAL

Quality Management System

ATGC LLC
Transport & General contracting L.L.C.

CERTIFICATE
OF REGISTRATION

This is to certify that the Management System of
A T G C Transport and General Contracting L.L.C.
Office No #901, Al Wadha Tower, Abu Dhabi, United Arab Emirates,
has been assessed and registered by Veritas Assurance International as conforming to the requirements of
ISO 9001:2015
Quality Management System

The Quality Management System is applicable to:
All Kind of Building Projects Contracting, Building Maintenance, Real Estate Development Construction, Sewerage Network, Mechanical and Electrical Contracting.

Certificate No : 321182065
Certificate issue date : 22-09-2021 | Certificate expiry date : 21-09-2024
1st Surveillance due before : 21-09-2022 | 2nd Surveillance due before : 21-09-2023

www.veritasassurance.com

VERITAS ASSURANCE INTERNATIONAL

WE ARE...

An ISO Certified Company

ATGC is accredited with all management systems to ensure quality and timely completion

- Quality Management System Standard ISO 9001:2015 Certificate
- Occupational Health and Safety Management System Standard ISO 45001:2018 Certificate
- Environmental Management System Standard ISO 14001:2015 Certificate

WE ARE...

An ADNOC Certified Company

ATGC is an ADNOC-Certified Contracting Company (ANID: AN01473828490) and is accredited to carry out the following contracting works:

- Building Maintenance.
- Transport of materials assembly Light Trucks
- Main Sewerage Networks contracting
- Rainwater Drainage contracting
- Building/Commercial EPC and MEP contracting
- Road and Infrastructure Works contracting

WE ARE...

An ADNOC nominated EPC contractor : Masaken Project

ATGC has already submitted the SOQ (Statement of Qualification) for the Masaken Project.

Under review by ADNOC:

Under a consortium where Apex Investments, a subsidiary of IHC Holding is the parent company
Offshore works associate partners are NMDC, Mammut and Al Fanar

Masaken: Pre-qualification Stage #01: SOQ Submitted

Masaken: Pre-qualification Stage #02: Underway with following documents being prepared:

- Project Structure
- Budgeting and Contractual Frameworks
- Technical Specifications
- High Level Project Execution Plan
- Procurement Process

OUR ESTEEMED CLIENTS

دائرة النقل
DEPARTMENT OF TRANSPORT
ABU BHABI



بلدية مدينة أبوظبي
ABU DHABI CITY MUNICIPALITY



ديوان ولي العهد
CROWN PRINCE COURT
ABU DHABI



المجلس التنفيذي
EXECUTIVE COUNCIL
ABU DHABI



THANK YOU



ATGC

50 GOLDEN YEARS OF TRUST